



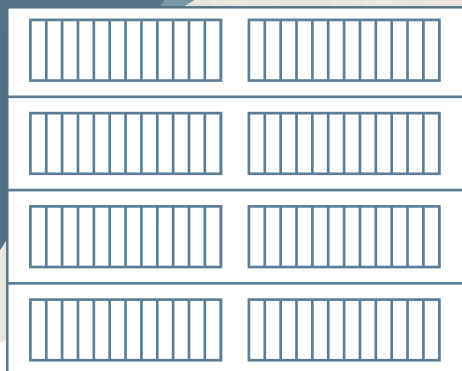
INVICTA DOOR®

500 series

LONG CARRIAGE HOUSE PANEL

The 500 series garage door features an elongated stamping for a charming twist on the classic carriage house garage door. Available in a variety of standard colors and premium wood tones.

SERIES 500
Long Carriage House



Long Carriage House Panel
Color: White
Windows: Cascade
Glass: Grey



CONSTRUCTION

2" thick
Width range: 6'0" - 20'0"
Height range: 6'0" - 14'0"



GLASS



Clear



Obscured



Acid Etched



Grey Tinted

**All glass finishes come in tempered and insulated options.*



COLORS

*Colors may vary. Refer to swatch book for accuracy.
Upcharge for premium wood tones.



White



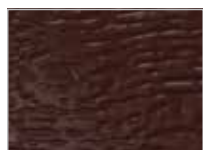
Almond



Sandstone



Desert Tan



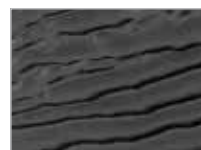
Brown



Bronze



Grey



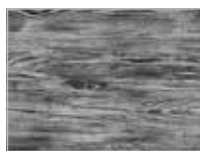
Black



American Redwood*



Bourbon Oak*



Dockside Grey*



WINDOW INSERTS



2 Piece Arched Stockbridge



2 Piece Arched Stockton



Cascade



Prairie



Straight Stockbridge



Stockton 4 Square



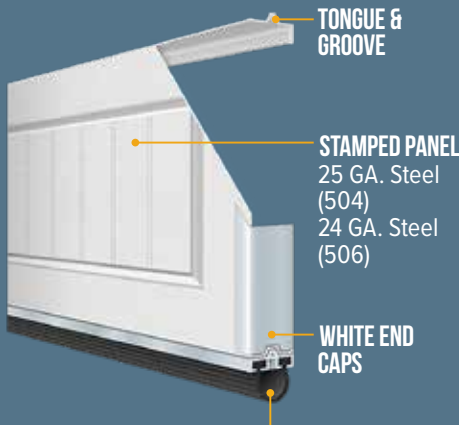
Stockton 8 Square



Plain

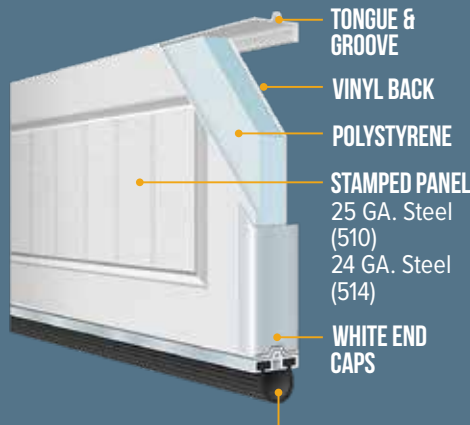
GOOD BETTER BEST

504/506 Model NON-INSULATED



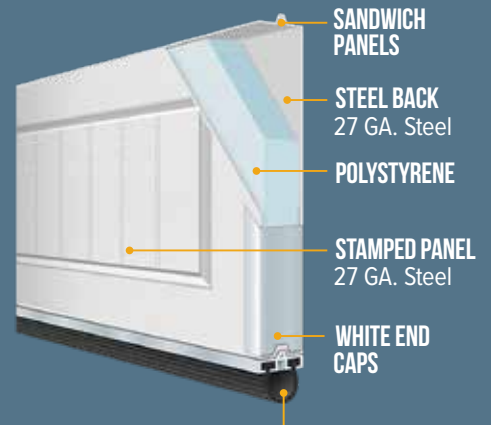
GOOD BETTER BEST

510/514 Model INSULATED



GOOD BETTER BEST

518 Model INSULATED



ALUMINUM RETAINER WITH VINYL LOOP

	04/06 MODEL	10/14 MODEL	18 MODEL
R-VALUE	-	7.7	9.7
DOOR THICKNESS	2"	2"	2"
CONSTRUCTION STYLE	Pan	Pan	Sandwich
CONSTRUCTION LAYERS	Steel	Steel + Insulation + Vinyl	Steel + Insulation + Steel
STEEL THICKNESS	25GA./24 GA.	25GA./24 GA.	27 GA-I / 27 GA-E
INSULATION TYPE	None	Polystyrene	Polystyrene
EXTERIOR COLORS (Wood-grain Embossed)			
White (WHT)	•	•	•
Almond (ALM)	•	•	•
Sandstone (SAN)	•	•	•
Brown (BRN)	•	•	•
Bronze (BRZ)	•	•	•
Grey (GRY)	•	•	•
Desert Tan (TAN)	•	•	•
Black (BLK)	•	•	•
Bourbon Oak (OAK)	•	•	•
American Redwood (RED)	•	•	•
Dockside Grey (DSG)	•	•	•
WOOD-GRAIN EMBOSSED	•	•	•
WINDOW INSERTS & GLASS	Optional	Optional	Optional
PAINT FINISH WARRANTY	15 Years	25 Years	25 Years
WORKMANSHIP/HARDWARE WARRANTY	3 Years	3 Years	3 Years

DISTINCTIVELY YOURS



InvictaDoor.com