



INVICTA DOOR®

200 series LONG RAISED PANEL

An elegant variation of a traditional garage door, our 200 series garage door features an elongated, raised stamp pattern. Available in a variety of standard colors and premium wood tones.

SERIES 200
Long Raised



Long Raised Panel
Color: Almond
Windows: Prairie
Glass: Clear



CONSTRUCTION

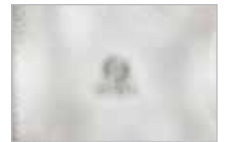
2" thick
Width range: 6'0" - 20'0"
Height range: 6'0" - 14'0"



GLASS



Clear



Obscured



Acid Etched



Grey Tinted

**All glass finishes come in tempered and insulated options.*



COLORS

*Colors may vary. Refer to swatch book for accuracy.
Upcharge for premium wood tones.



White



Almond



Sandstone



Desert Tan



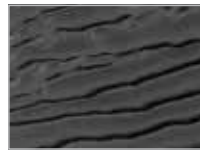
Brown



Bronze



Grey



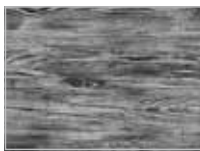
Black



American Redwood*



Bourbon Oak*



Dockside Grey*



WINDOW INSERTS



2 Piece Arched Stockbridge



2 Piece Arched Stockton



Cascade



Prairie



Straight Stockbridge



Stockton 4 Square



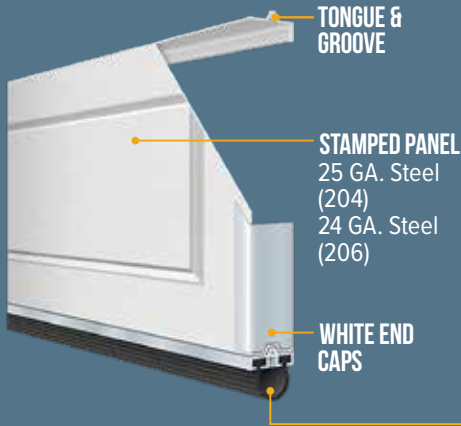
Stockton 8 Square



Plain

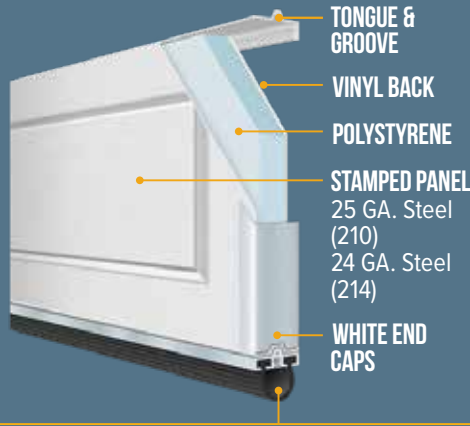
GOOD BETTER BEST

204/206 Model NON-INSULATED



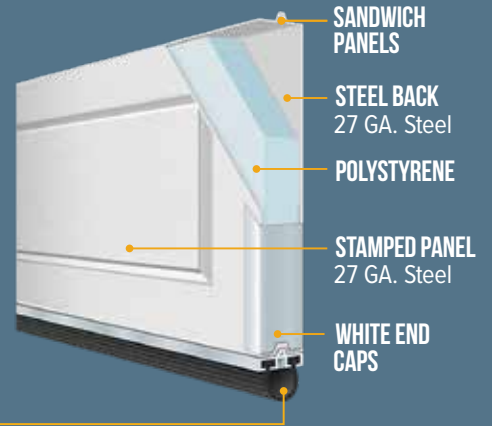
GOOD **BETTER** BEST

210/214 Model INSULATED



GOOD BETTER **BEST**

218 Model INSULATED



ALUMINUM RETAINER WITH VINYL LOOP

	04/06 MODEL	10/14 MODEL	18 MODEL
R-VALUE	-	7.7	9.7
DOOR THICKNESS	2"	2"	2"
CONSTRUCTION STYLE	Pan	Pan	Sandwich
CONSTRUCTION LAYERS	Steel	Steel + Insulation + Vinyl	Steel + Insulation + Steel
STEEL THICKNESS	25GA./24 GA.	25GA./24 GA.	27 GA-I / 27 GA-E
INSULATION TYPE	None	Polystyrene	Polystyrene
EXTERIOR COLORS (Wood-grain Embossed)			
White (WHT)	•	•	•
Almond (ALM)	•	•	•
Sandstone (SAN)	•	•	•
Brown (BRN)	•	•	•
Bronze (BRZ)	•	•	•
Grey (GRY)	•	•	•
Desert Tan (TAN)	•	•	•
Black (BLK)	•	•	•
Bourbon Oak (OAK)	•	•	•
American Redwood (RED)	•	•	•
Dockside Grey (DSG)	•	•	•
WOOD-GRAIN EMBOSSED	•	•	•
WINDOW INSERTS & GLASS	Optional	Optional	Optional
PAINT FINISH WARRANTY	15 Years	25 Years	25 Years
WORKMANSHIP/HARDWARE WARRANTY	3 Years	3 Years	3 Years

DISTINCTIVELY YOURS



InvictaDoor.com